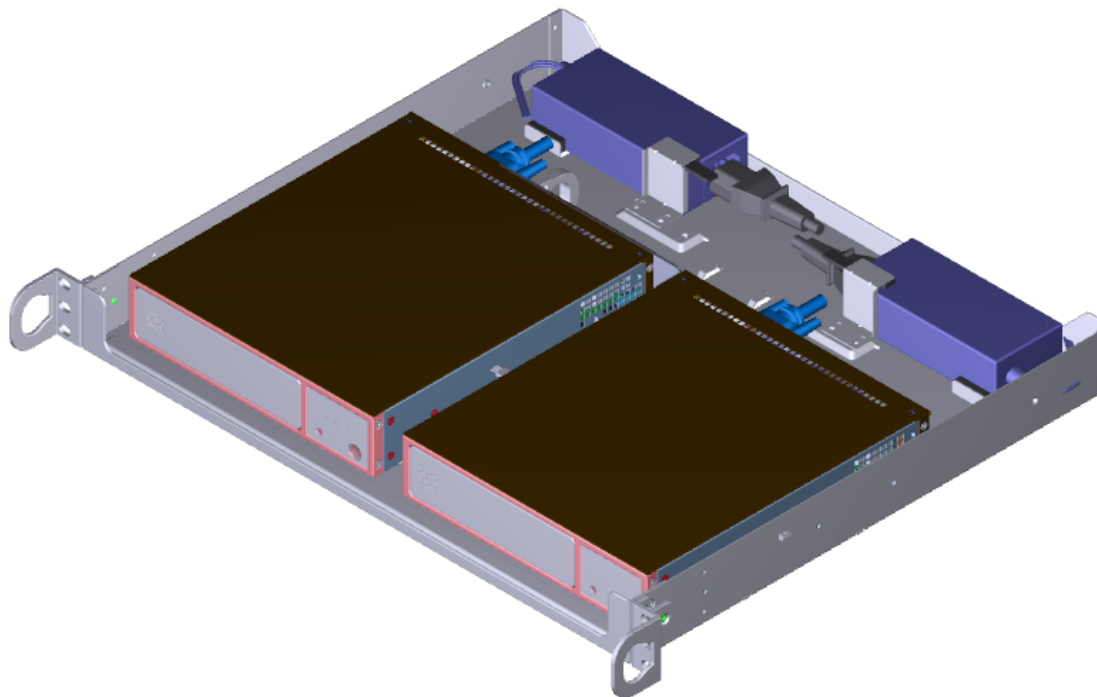




Installing 2x SYS-E200-9A in 1U Space

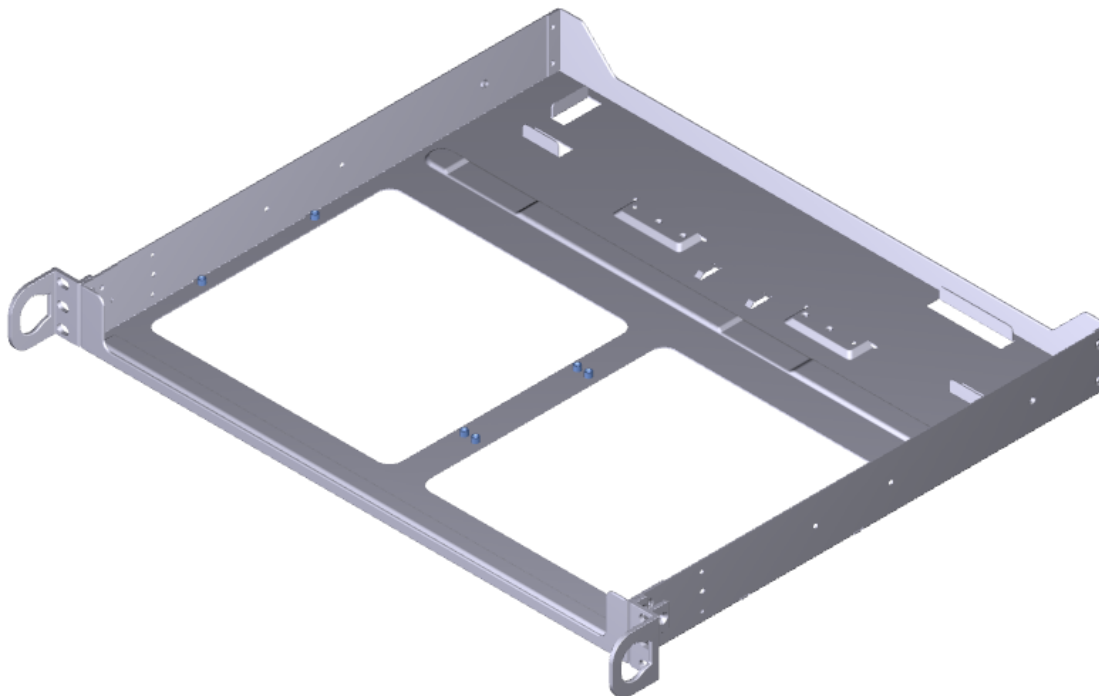


3.0



What's in MCP-290-10108-0B? (Part I)

- Tray Base

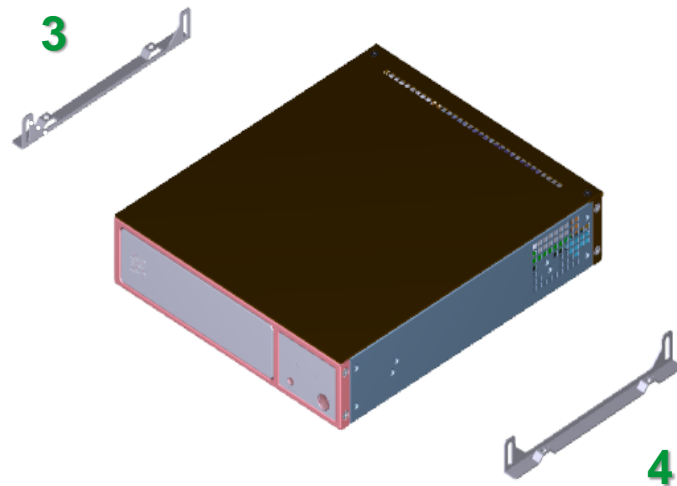
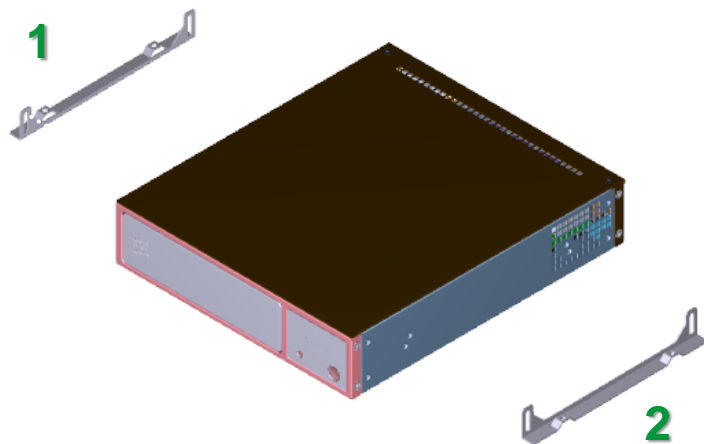


3.0



What's in MCP-290-10108-0B? (Part II)

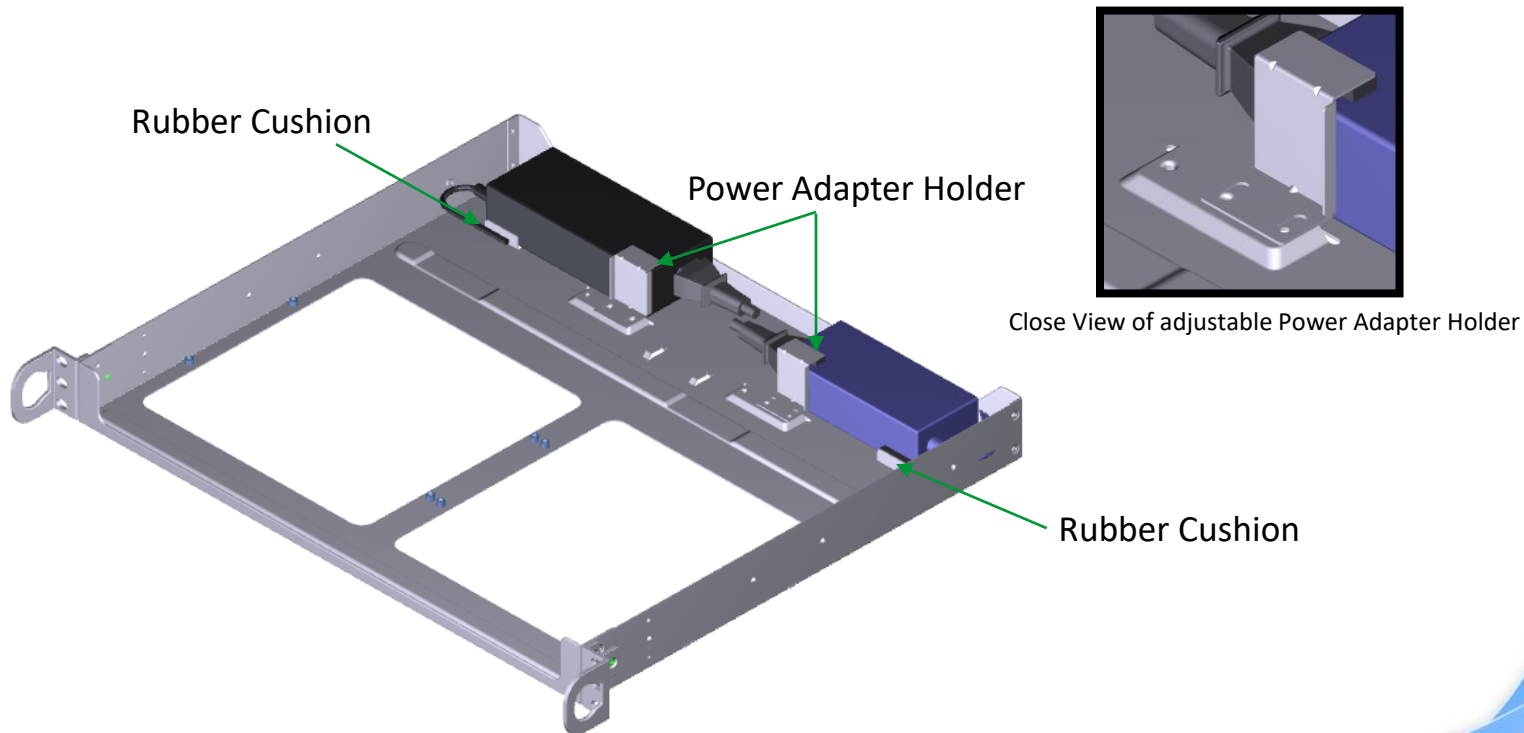
- 4x Mounting Bracket
- 1x Screw bag (including 20 screws) for the installation of Mounting Bracket





What's in MCP-290-10108-0B? (Part III)

- 1x Bag (including 1x Power Adapter Holder and 2x Rubber Cushion), for left power adapter
- 1x Bag (including 1x Power Adapter Holder and 2x Rubber Cushion), for right power adapter





What's in MCP-290-10108-0B? (Part IV)

- 1x Screw Bag for mounting the whole device to Rack Cabinet
 - Including : 22x SCREW M4*4L
 - 8x SCREW M5*12L
 - 8x WASHER

